

**Space for colourful future!**



DESIGNED & MANUFACTURED

WITH PASSION BY

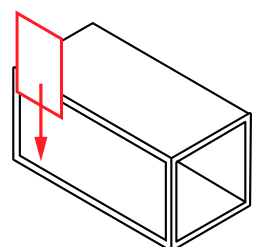
 **BOXME**  
STEEL TAILORS

## What MODULO<sup>®</sup> is about

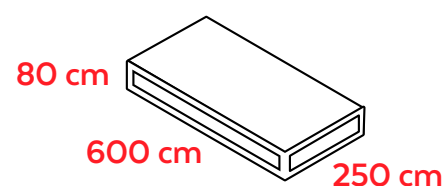
MODULO is a simple, colourful and easy-to-use, multifunctional system based on a 6-meters' long steel frames. Modulo makes it possible to create various types of event spaces such as **event booths, pop-up stores, food boxes, promo stands, restaurant, food outlets and many more**, by a quick mounting of external and internal walls, windows, doors, stairs and branding elements.

What more, it's patented

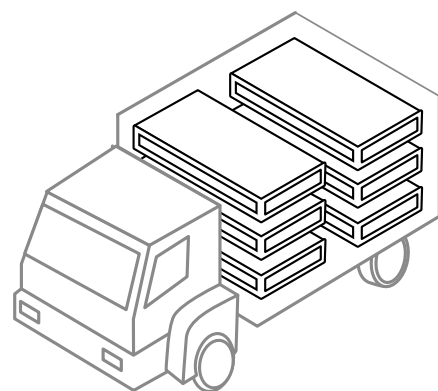
# MODULO® | FACTS



Each MODULO steel frame is equipped with special profiles, allowing mounting of light walls, windows, roofing and stairs, thus modifying space and functions. It is possible to create a single MODULO box or complicated structures consisting of many combined and stacked modules.



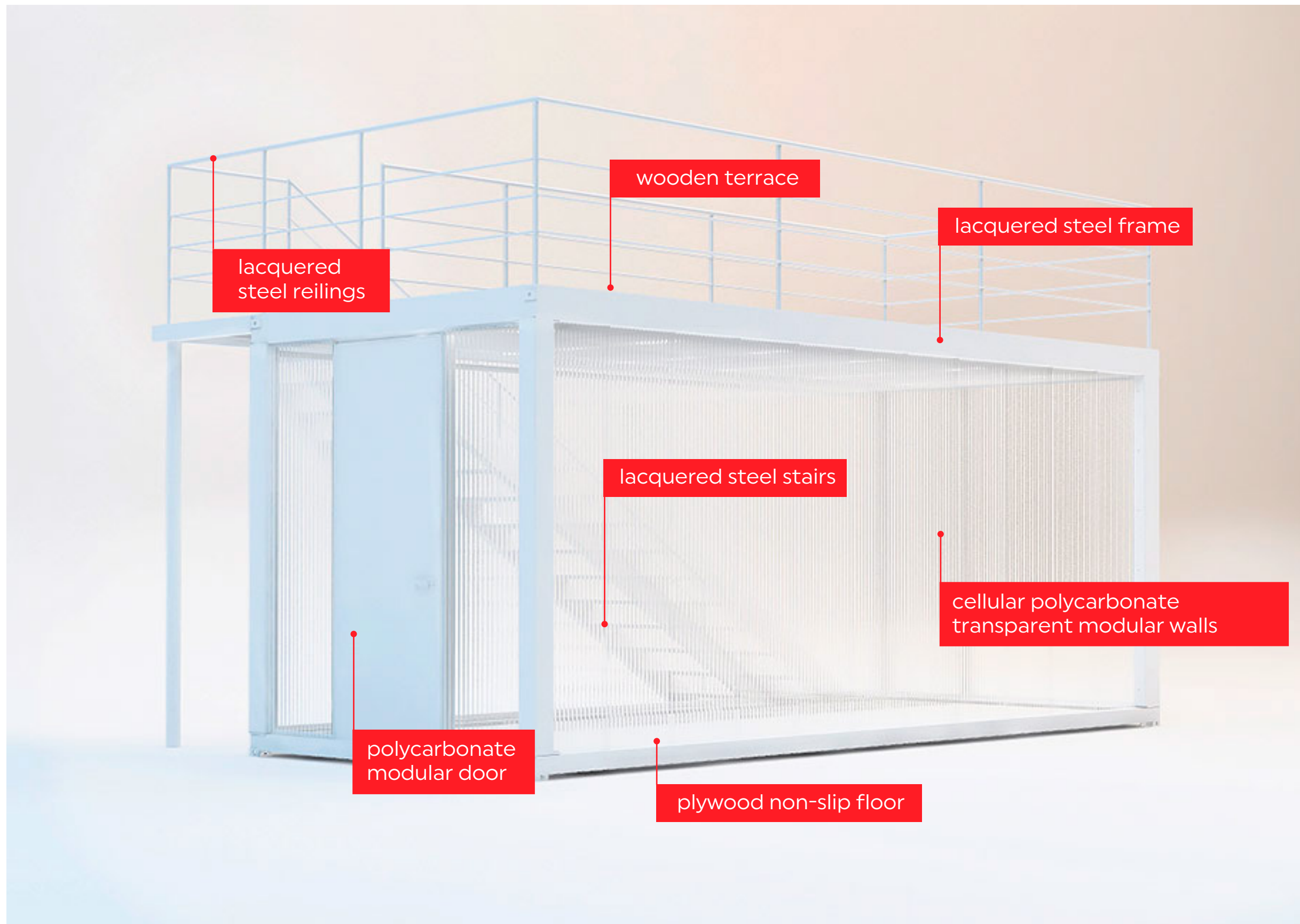
A single packed MODULO is only 80 cm high!



One truck can comprise up to 6 MODULO packs!

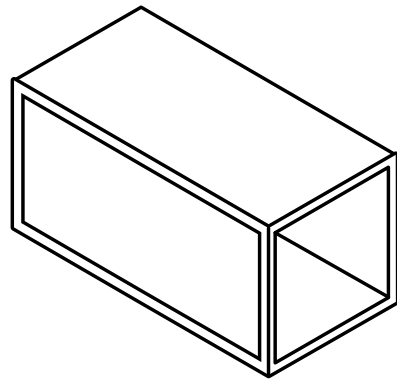
# MODULO<sup>®</sup> | ELEMENTS

4

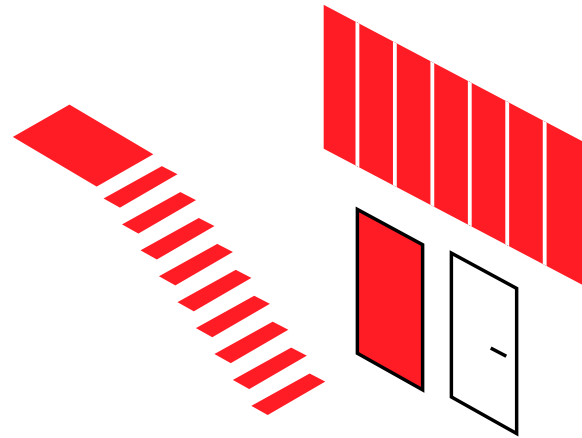


# MODULO<sup>®</sup> | MANUAL

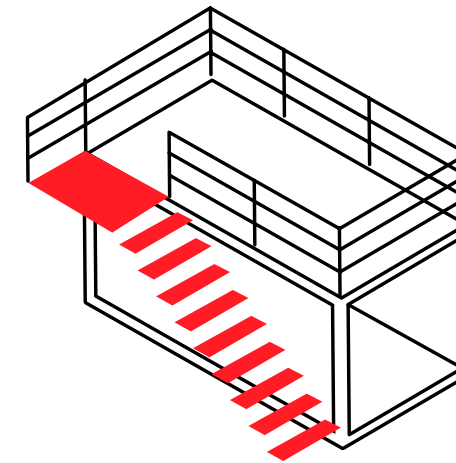
5



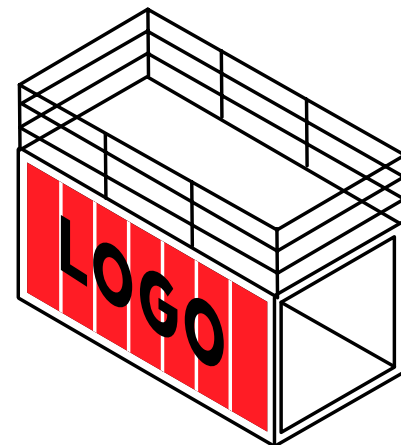
1 Rent a modulo steel frame.



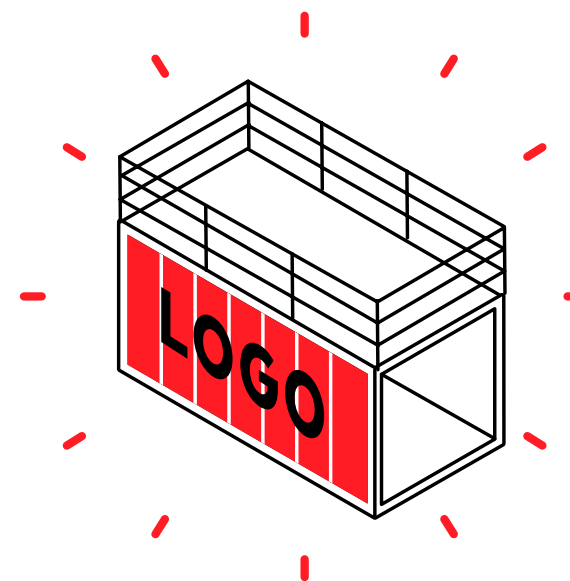
2 Choose modular walls, windows, doors, stairs, etc. Choose colours of the elements.



3 Arrange space out of the elements.



4 Design and place own branding elements as stickers, banners, screens, stands, sunshades etc.



5 Your MODULO box is ready to use!

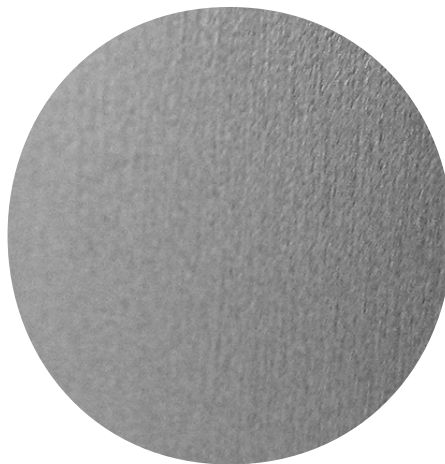
# MODULO<sup>®</sup> | MATERIALS



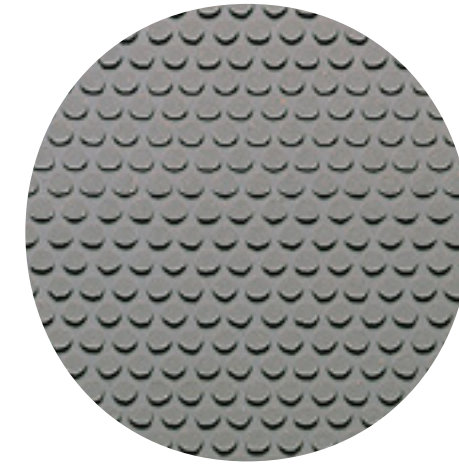
transparent  
polycarbonate  
(walls)



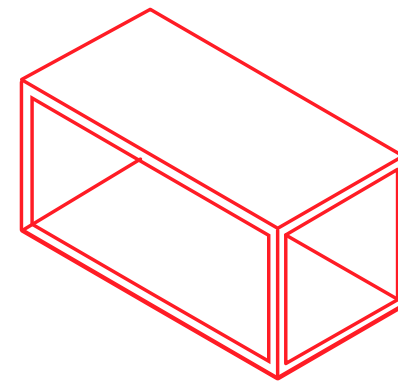
white lacquered  
wooden planks  
(terrace)



steel profiles  
(frame and stairs)



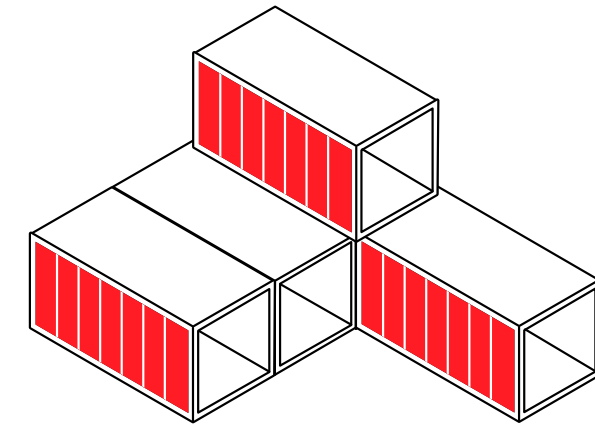
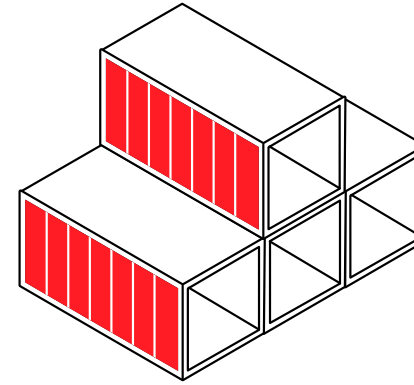
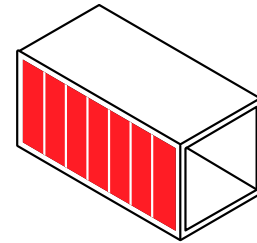
non-slip plywood  
(floor)



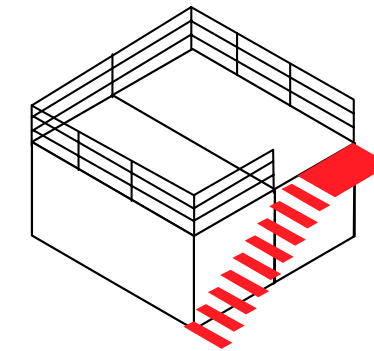
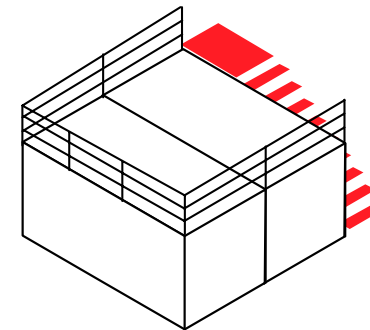
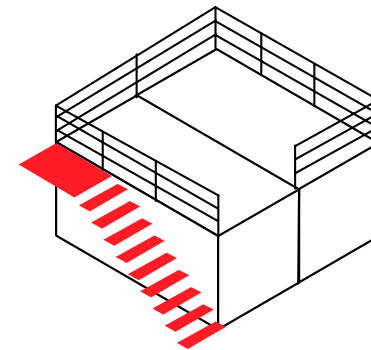
transparent Plexiglas  
(windows)

# MODULO<sup>®</sup> | SELECTED CONFIGURATIONS

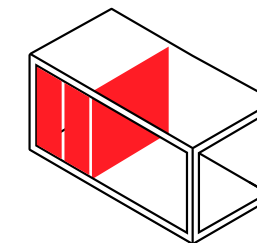
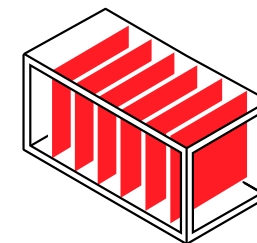
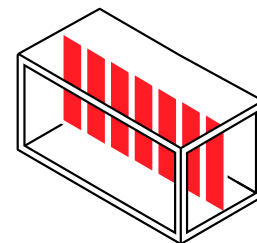
SELECTED  
MODULES'  
CONFIGURATIONS



SELECTED  
STAIRS'  
LOCATIONS



INSIDE & OUTSIDE  
WALLS' POSITIONS







# CHOOSE COLOUR OF THE WALLS



# CHOOSE COLOUR OF THE FRAME

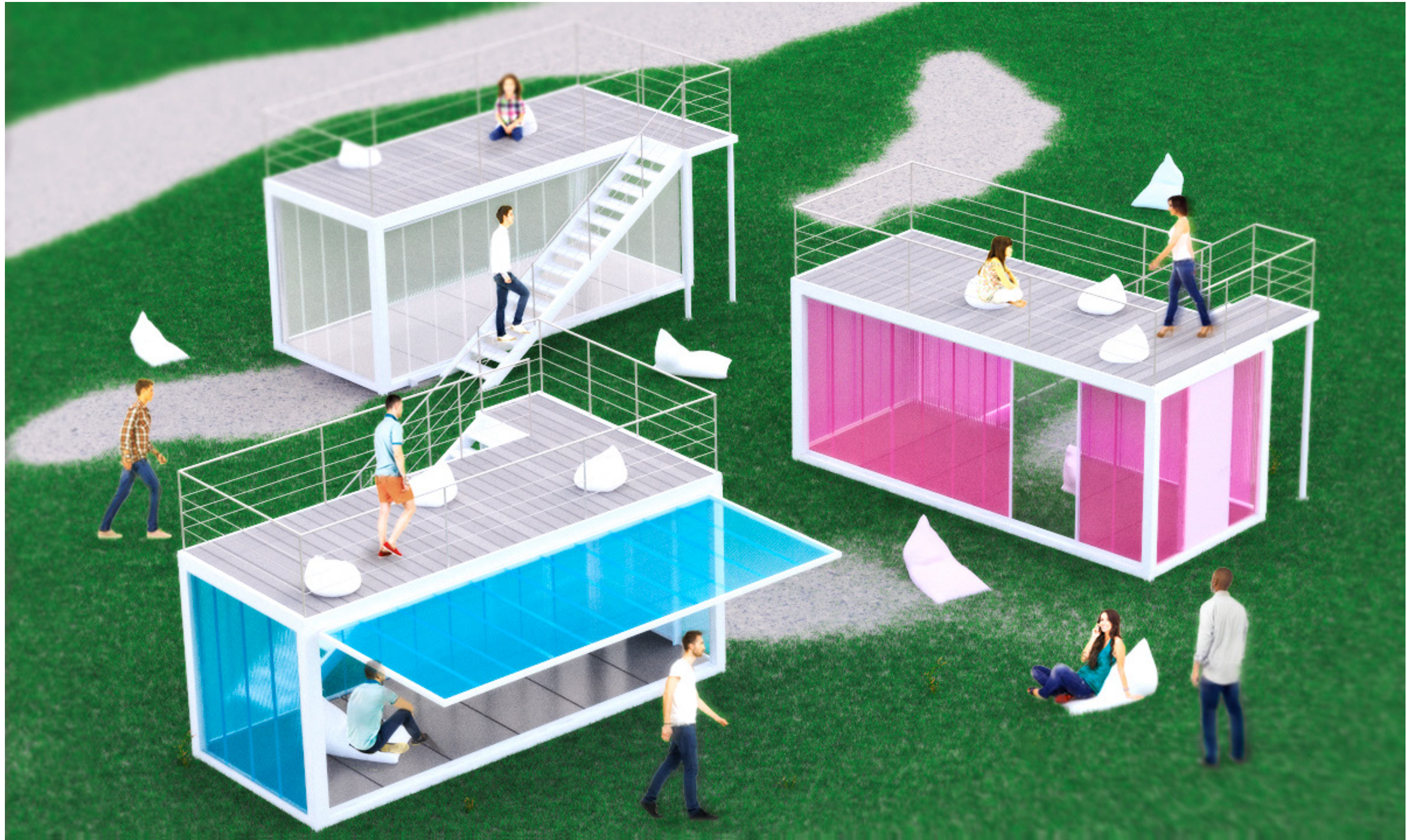


# DESIGN OWN BRANDING





# MODULO<sup>®</sup> | EXEMPLARY EVENT SET





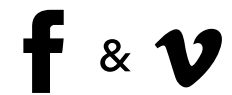
# CONTACT US

**Boxme Steel Tailors**  
Mińska 25  
03-808 Warsaw, Poland

Wojtek Wysocki | + 48 600 499 100  
Marek Mielnicki | +48 608 499 442

office@boxme.pl  
[www.boxme.pl](http://www.boxme.pl)

Find us also here:



# MODULO<sup>®</sup> | PRICES

ONE DAY **750 Euro**

WEEKEND  
(FRIDAY-SUNDAY) **1'500 Euro**

ONE MONTH **9'000 Euro**

Prices for one MODULO box.

Extra services not included.

VAT tax not included.

Call for the detailed estimation.